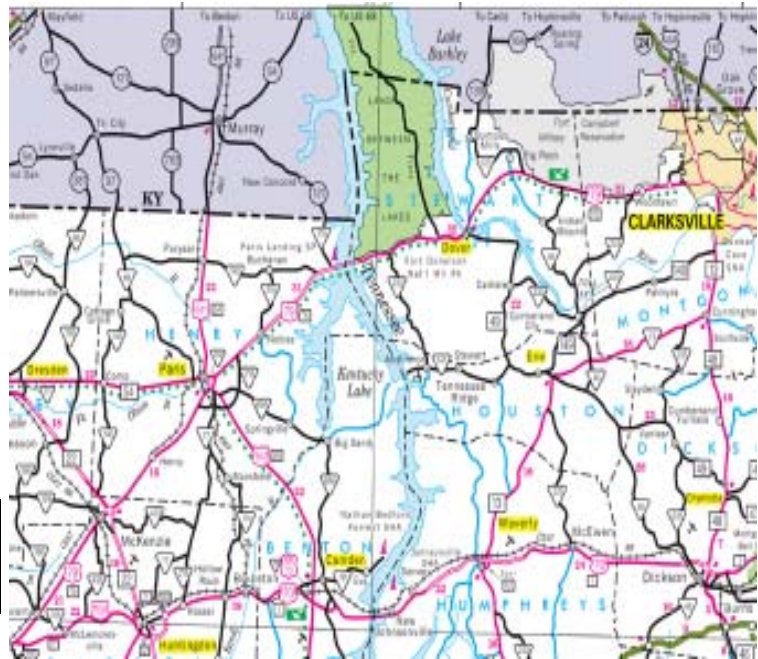


Land Between the Lakes



Hiking

Backpacking and day hiking are two of the more popular Scouting activities and LBL provides opportunities for both. The North South Trail ranges from easy stretches in the southern end of Land Between the Lakes to the more rugged northern portion, and it provides an excellent opportunity for a multi day backpacking trip. Points along the trail are accessible from The Trace. This beautiful trail is sixty five miles long over a two hundred foot elevation change; the North South Trail is rated moderate to strenuous. The Fort Henry National Recreation Trail is a system of ten interconnecting trails in the southern part that totals twenty six miles and connects Fort Donelson and Fort Henry. This moderate trail spans an elevation of one hundred feet and may be interesting to troops taking Citizenship in the Nation merit badge because the trail closely follows Grant's troop movements during the attack on Fort Donelson and Fort Henry. The Canal Loop Trail is a system of easy to moderate trails with an elevation change of only eighty feet. It is located in the northern section of Land Between the Lakes. This trail is one of the more popular in LBL because it rewards hikers with incredible views of the lake for only taking a short hike ranging from 1.5 miles to fourteen miles.



Background

LBL is one of the largest recreational areas in the United States of America. It is situated on 170,000 acres between Kentucky Lake and Lake Barkley in Tennessee and western Kentucky. The Army Corps of Engineers began Barkley Dam in 1959, and in 1963, President Kennedy created Land Between the Lakes National Recreation Area. Today, LBL generates over \$600 million in a tourism industry it spawned. Land Between the Lakes features boating, fishing, camping, backpacking, day hiking, horse back riding, and attractions such as the Old Homeplace.



Camping

Land Between the Lakes also offers superb camping facilities. It has two types of shoreline access, fee based Lake Access Areas and Camping Areas. Lake Access Areas feature campsites, picnic tables, chemical toilets, drinking water, trash pickup and boat ramps. These areas are particularly suited to Cub Scout Packs, but most Boy Scout Troops should probably avoid these civilized areas. The Camping Areas are geared more to individuals who are trying to get away from civilization. They have boat ramps, but not all of them have prepared campsites. Some of them have picnic tables and grills. Camping Areas do not have the conveniences of Lake Access Areas. A Camping Area would be ideal for an extended canoe trip. To use a Camping Area, a Backcountry Caper Use Permit is required. When backcountry camping in LBL, be sure to avoid cemeteries, picnic areas, fee campgrounds, the Environmental Education Area, and areas within 200 yards of paved roads. Piney Campground is a fee based campground at the southern tip of LBL, and it is open from March 1 until November 30. Even though Piney caters more to RV 's than tents, a troop can spend an enjoyable weekend at Piney Campground. Troops can rent bicycles and try the biking trails or the Bike Skills Court. Other facilities include archery range, ballfields, swimming beach, campfire area, boat ramps, and fishing. Piney may not be the best place for troops that specialize in backcountry experiences; however, younger Scouts can learn and practice basic skills in a comfortable environment.



Homeplace

Another interesting attraction at LBL is The Homeplace. This rural farm is operated by reenactors from March 1 until November 30. Scouts can see what life was like during the mid nineteenth century. Visitors are free to roam the buildings and grounds. Visitors are encouraged to talk to the reenactors and interact with them. The Homeplace is open daily from 9:00 A.M. until 5:00 P.M. Monday through Saturday, 10:00 A.M. until 5:00 P.M. on Sunday. The Homeplace will be closed Mondays and Tuesdays during the months of November and March. Admission is \$3.50 for ages thirteen and up; \$2.00 for ages five to twelve years old. Four year olds and under receive free admission. This is an excellent outing for either a Scout Troop or a Cub Scout Pack.



Side Trips

There are a few interesting side trips nearby Land Between the Lakes. Fort Donelson and Fort Henry are located are excellent places to visit. These two forts were captured by Gen. Grant in early 1862. The exhibits and trails are an excellent opportunity for any troop interested in Civil War history.